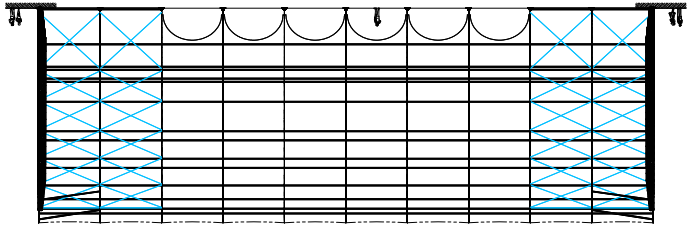
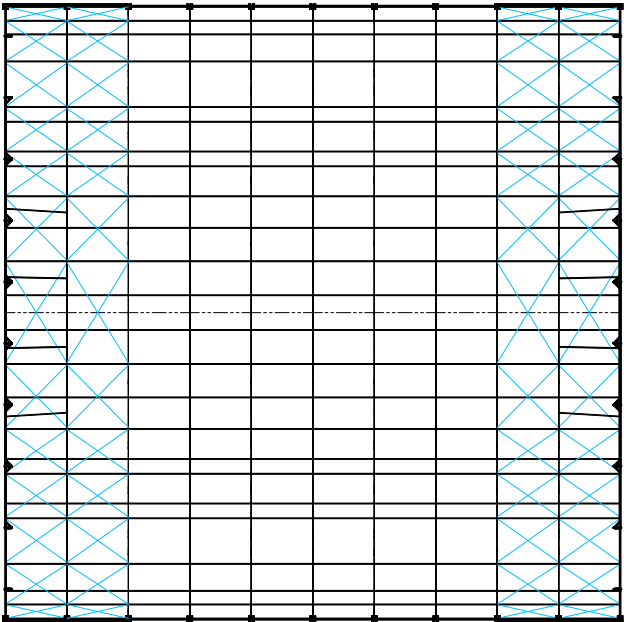


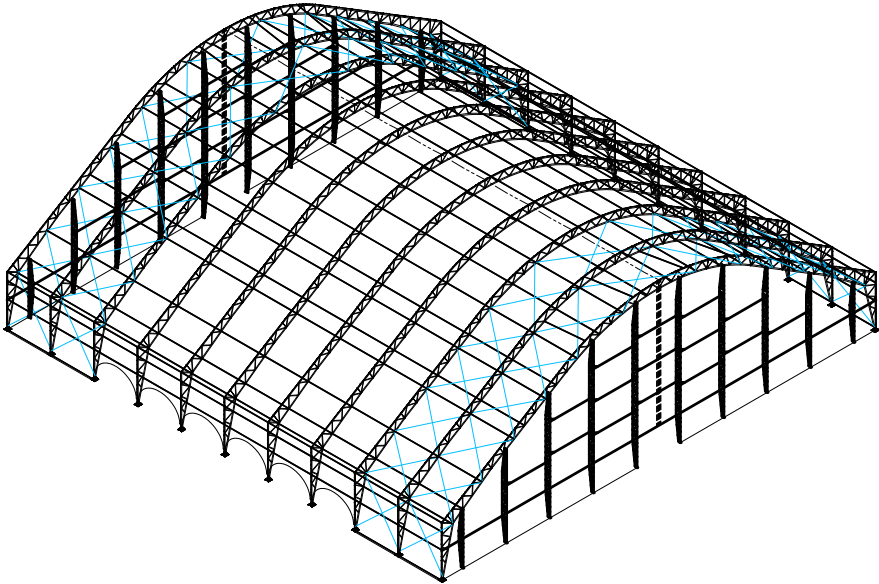
SIDE VIEW



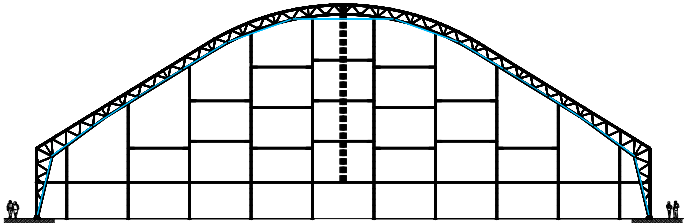
PLAN VIEW



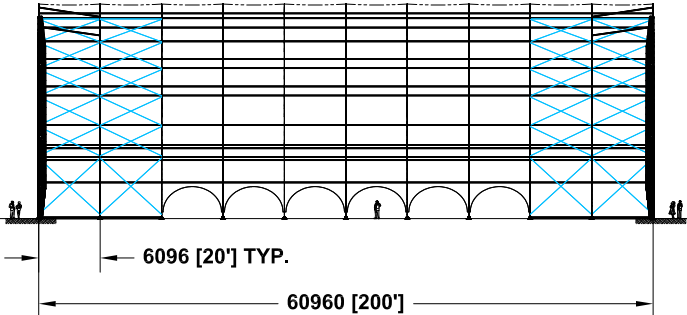
ISO VIEW



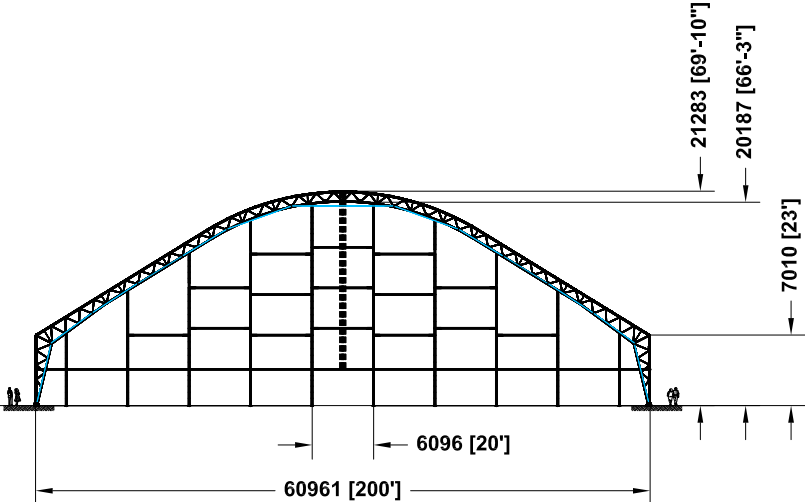
END VIEW



SIDE VIEW



END VIEW



ASSY DWG # \_\_\_\_\_

**IMPORTANT:**

Each installation site must be evaluated by installer to determine proper securing method. Site condition may require anchorage different from what was provided with the tent.

**ANCHORAGE:**  
STEEL STAKES, EARTH AUGERS, "DUCKBILL"  
TYPE, CONCRETE PILE, BALLAST BLOCKS  
OR OTHER ANCHORS DEPENDING ON SOIL

AREA	3,716 m <sup>2</sup>	40,000 sq. ft.
WEIGHT	-kg	-lbs

**Warner Shelter Systems Limited**

SCALE	1:750	REVISIONS	BY	DATE
DATE	2025.07.10	-	-	-
DRWN. BY	CHKD. BY			
BIN				
APPROVED BY				

TITLE	NUMBER
GIGA-SPAN SERIES 37 200' X 200' 20' BAY	73057

COPYRIGHT © - WARNER SHELTER SYSTEMS LIMITED

WARNER GIGA-SPAN  
LOCATION : \_\_\_\_\_  
GROUND SNOW LOAD : \_\_\_\_ kPa ( \_\_\_\_ psf )  
ASSOCIATED RAIN LOAD : \_\_\_\_ kPa ( \_\_\_\_ psf )  
HOURLY WIND PRESSURE 1/50 YEAR : \_\_\_\_ kPa ( \_\_\_\_ psf )  
EXPOSURE : \_\_\_\_\_ CATEGORY : \_\_\_\_\_

**ARCH BASE REACTIONS:**

★ NOTE: UPLIFT ALSO CARRIED BY  
TENSION TUBES

↔ \_\_\_\_ kip  
↓ \_\_\_\_ kip  
↑ \_\_\_\_ kip

FRAME: STRUCTURAL STEEL TUBING TRUSS  
GALVANIZED FINISH

FABRIC CLADDING:  
VINYL/POLYESTER OR POLYETHYLENE FABRIC,  
FIRE RETARDANT - ULC S-109, - NFPA 701,  
CALIFORNIA FIRE MARSHAL

PERSONAL DOORS:  
MAY BE LOCATED IN ANY MODULE  
(SINGLE OR DOUBLE)

ANCHOR LOCATIONS	ANCHOR TYPE	PART #	QTY	COMMENTS
USE DURATION	YEAR ROUND			NUMBER OF YEARS
	TEMPORARY			NUMBER OF MONTHS
				NUMBER OF WEEKS
	FROM	/	/	TO

PROPOSED FOR: